

The Craftsman

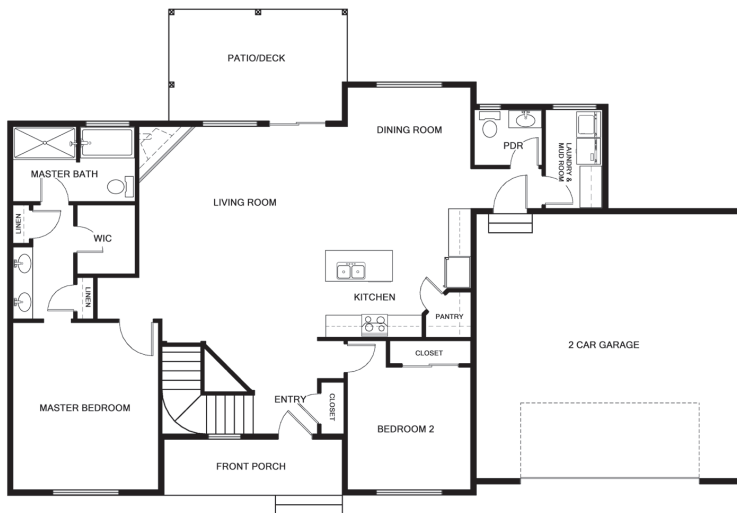
Exclusive Westcraft Home Plan

Specs:

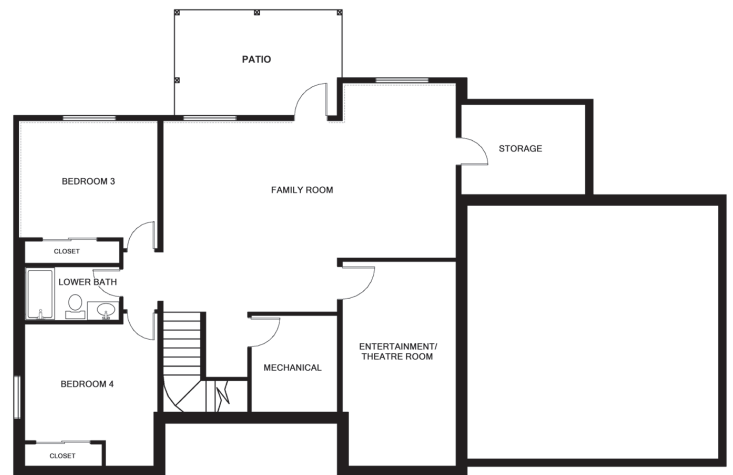
- 2875 Sq Ft plus 592 sq ft garage
- 4 bedrooms
- 2 1/2 bathrooms
- Optional Upgrades: 1 or 2 fireplaces

Craftsman Overview:

Beautiful entry welcomes you into the main floor vaulted great room and large kitchen. The master retreat, a large laundry room, bedroom and another bath complete the main floor layout. Providing space for an active family or guests, the lower level offers a big family room, two more bedrooms, a flex or theatre room and a full bath. There is space for everyone to enjoy.



Main/Upper Level 1405 SQ FT



Lower Level 1405 SQ FT



Sales Office: 115 W Monture Ridge
Kalispell, Montana
Open Daily Noon- 5pm

• Sales: 406-885-6081 •

