

The Maple

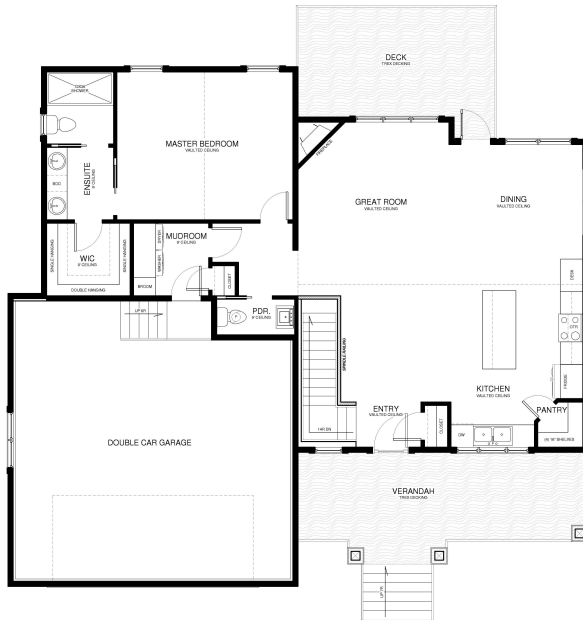
Exclusive Westcraft Home Plan

Specs:

- 2374 sq ft
- 4 bedrooms
- 2.5 bathrooms
- Optional upgrades: Fireplace(s), 3 car garage

The Maple Overview:

Bright, spacious, vaulted ceilings and open living in this lovely home. The main floor features a large great room, well appointed kitchen, mudroom and master bedroom with a well designed en-suite and an enviable walk in closet. Everything you need on one floor! Walk down to the lower level that boasts a large family room with a modern fireplace. The three additional bedrooms and full bath offer plenty of space for multiple uses.



Main Level



Lower Level



Sales Office: 115 W Monture Ridge
Kalispell, Montana
Open Daily Noon- 5pm

• Sales: 406-885-6081 •

