

The Benson

Exclusive Westcraft Home Plan

Specs:

- 4379 sq ft
- 5 Bedrooms
- 3.5 Bath
- Walk-out or Daylight Basement optional
- 3 Car Garage



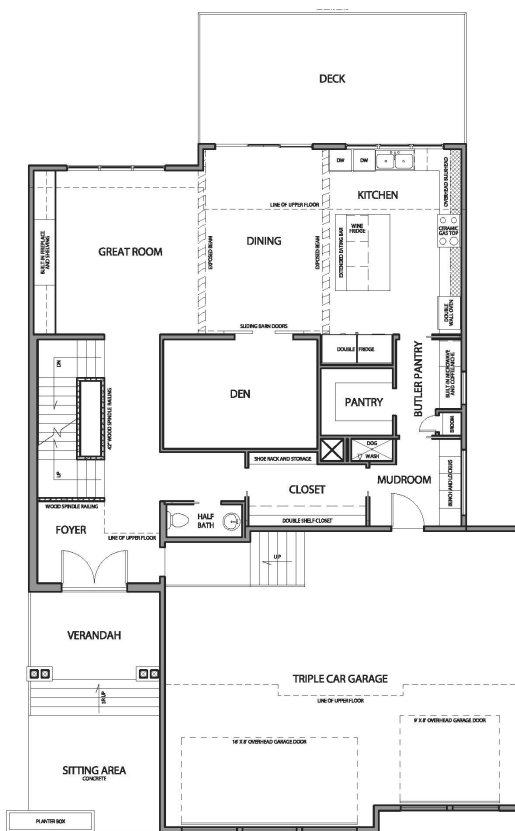
The Benson Overview

Incorporating such luxurious features as a main floor butler pantry, flush-mount fireplace*, dog wash station* and lavish kitchen. The basement floor adds a theatre room*, full bar, games area, a bedroom and bathroom and both interior and exterior fireplaces. The upper floor hosts an elegant ensuite and master suite, spacious laundry room, bonus room, bathroom and three additional bedrooms, while the wood dressed exterior boasts a tremendous triple car garage.

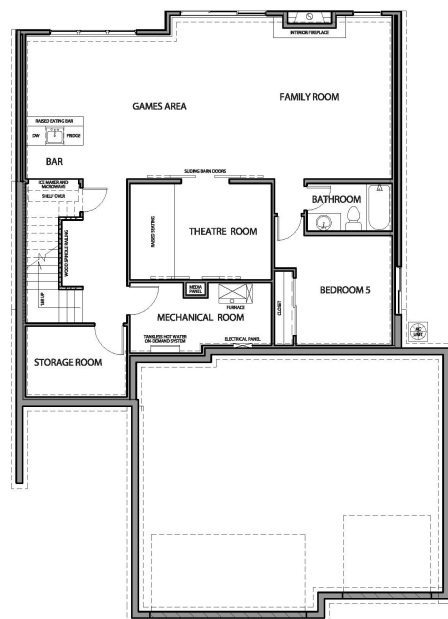
*Optional upgrades



Upper Level
1569 SqFt



Main Level
1465 SqFt



Basement Level
1345 SqFt



Sales Office: 132 W Monture Ridge
Kalispell, Montana
Call for details

• Sales: 406-885-6081 •

