

The Fraser

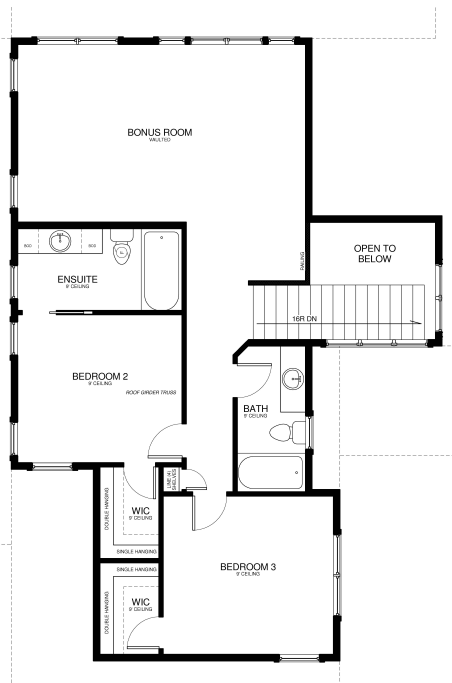
Exclusive Westcraft Home Plan

Specs:

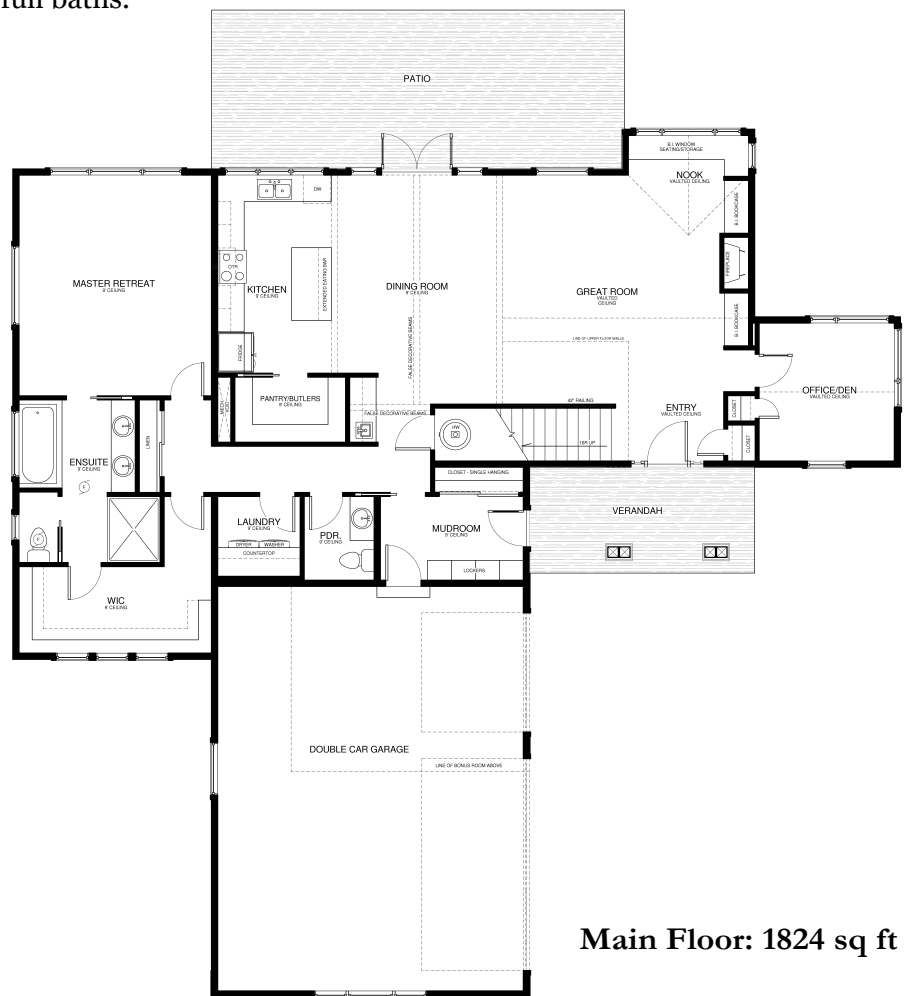
- 2775 sq ft
- 3 bedrooms
- 3.5 bathrooms
- Walk-in-Closets in all rooms
- Office / Den
- Main Floor Master
- Optional Upgrades: Fireplace, wet bar, built-in seating area, basement

Fraser Overview

The main floor boasts a spacious great room with fireplace* and built-in cabinets*, including built-in seating* in the sunny nook. The kitchen includes an oversized island, Butler's pantry, and wetbar *off the dining area – a fabulous entertaining space! Windows abound in the den located directly off the main entry. Multiple entry doors lead into the mudroom from the verandah and the garage hosting a large boot bench and plenty of storage. Master retreat features a dual vanity sink, separate shower & soaking tub and enormous walk-in closet. The top floor is open to the lower level with a large bonus room including vaulted ceiling, 2 additional bedrooms with their own walk-in closets and 2 full baths.



Upper Floor: 951 sq ft



Main Floor: 1824 sq ft



Sales Office: 132 W Monture Ridge
Kalispell, Montana
Call for a private or remote showing

• Sales: 406-885-6081 •

