

# The Brookhaven

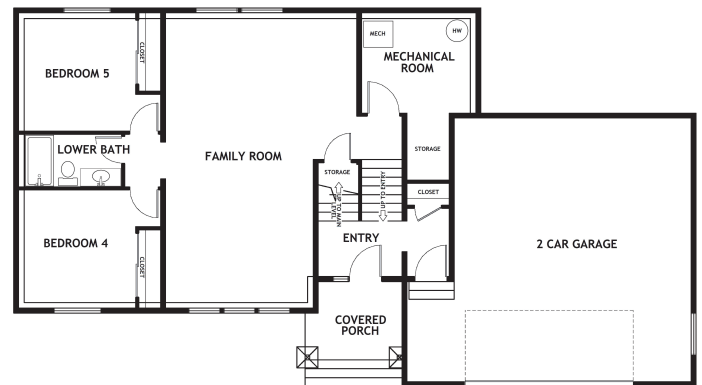
## Brookhaven Overview:

- 2636 sq ft sq ft
- 5 bedrooms
- 3 bathrooms
- Fireplace

Fall in love with this multi-level split entry. Enjoy privacy and quiet having the master suite tucked away on the upper level. Only a few steps away on the main floor there are two additional bedrooms and a bath. With vaulted ceilings, the main floor also features an open floor plan kitchen and great room as well as a main floor laundry. With generous amounts of glass this home is flooded with natural light all year around. The day light lower level offers a large family room, bedroom and bath.



Main/Upper Level 1585 SQ FT



Lower Level 1051 SQ FT

This is a representation of the Brookhave plan, actual build may vary and is subject to change without notice. Selections are made at frame stage and are final.



MODEL OPEN  
132 W Monture Ridge  
Friday - Monday  
Noon - 4pm

Sales Team  
406.885.6081

Plan is copyrighted property of Westcraft Homes.  
© 2022 WESTCRAFT HOMES.

