

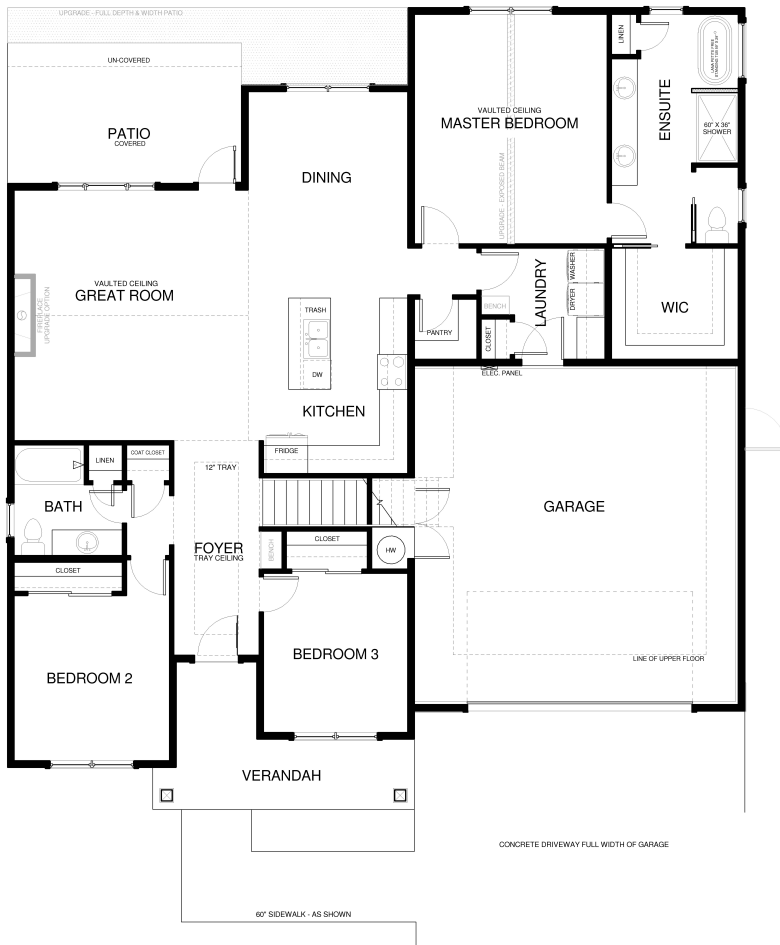
The Willow II



Elevation A

Willow II Overview:

The Willow II is a gorgeous home providing convenient, easy living on one level with a spacious upper bonus room with full bath! This home has a bright open layout with vaulted ceiling and an abundance of windows. The spacious home features a lovely master suite, 2 additional bedrooms, a laundry/mud room and an open great room with a large kitchen.



Specs:

- 2202 sqft
- 3 bedrooms
- 3 bathrooms
- Upper Bonus Room
- Fireplace
- 2 or 3 car garage depending on lot size



This is a representation of the Elm plan, actual build may vary and is subject to change without notice. Selections are made at frame stage and are final.



MODEL OPEN
132 W Monture Ridge
Friday - Monday
Noon - 4pm

Sales Team
406.885.6081

Plan is copyrighted property of Westcraft Homes.
© 2022 WESTCRAFT HOMES.

