

NORTHVIEW

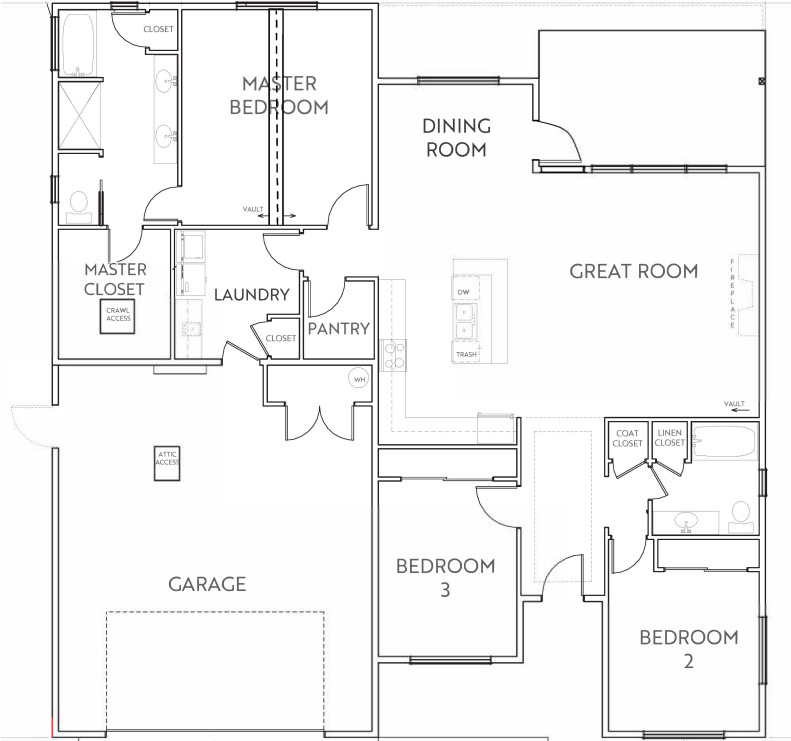
AT NORTHLAND



Specs:

- 1804 sq ft
- 3 bedrooms
- 2 bathrooms
- Fireplace
- 2 car garage

Distinctive, original and modern.



A welcoming entry leading into the open great room. Vaulted ceiling from the great room into the kitchen. Warm fireplace and amazing windows. Incredible kitchen with large island, plenty of cabinets, appliances and huge pantry. Great master suite features a vaulted ceiling and luxurious bath. Dual master bath vanity, tiled shower and separate tub. Big linen closet and large master closet. Two big secondary bedrooms and big main bath. Laundry room with closet.



Westcraft Homes
 Sales Team
 406.885.6081
CALL TODAY

NorthviewMT.com

All information and illustrations represented on this sheet are approximate in nature and are subject to change and refinements without notice at the builder's discretion. Drawing can not be used for construction. Plan is copyrighted property of Westcraft Homes. © 2023 WESTCRAFT HOMES.

