

The Primrose

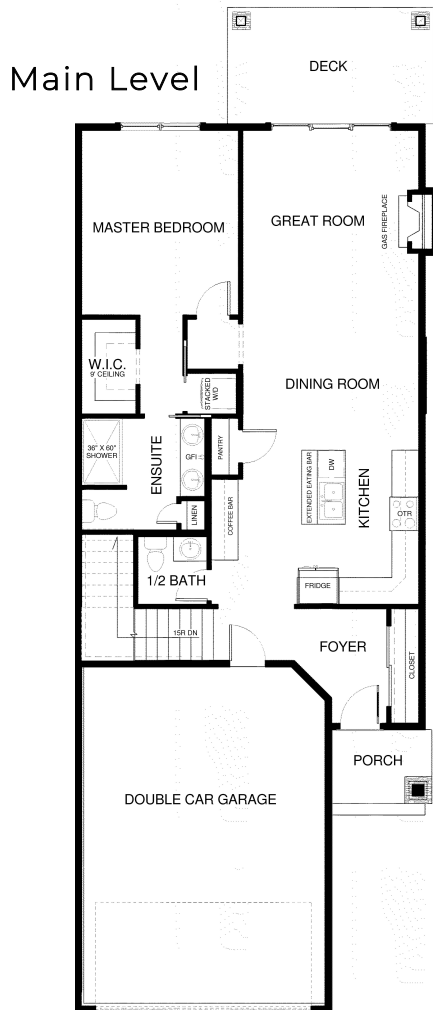
\$689,000

165 Meadows Vista Loop 29B
Kalispell, Montana

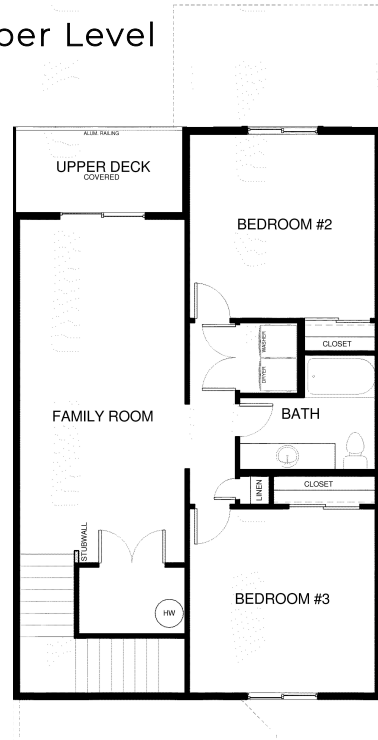


The Primrose

The Primrose duplex offers a gorgeous three bedroom, 2 1/2 bath home with walk-out patio, upper deck and 2 car garage. This open floor plan features a spacious kitchen, dining, great room and master suite on the main level. The upper level includes a family room, 2 bedrooms, full bath and additional storage!



Upper Level



Specs:

- 2069 sq ft
- 3 Bedroom
- 2.5 Bath
- Main level master
- 2 Car Garage

This is a representation of the Primrose plan, actual build may vary and is subject to change without notice. Selections are made at frame stage and are final.

Lot 29B Selection Sheet* 165 Meadow Vista Loop

*All selections are ordered and final at framing stage.

Cabinets:
Door Style: Shaker
with Bevel
Amazing Gray in
Kitchen

SW 7044
Amazing Gray
Interior / Exterior
Location Number: 245-C2



Backsplash: Soho
Tile Name: Boston
TLAMBSTHBS 2 X
10 Color: Hibiscus



Quartz Counters
Color: Lyra



Fireplace Design Only

Brick facade surround

Walls & Ceilings

Egret White SW 7570

Trim & Doors

Pearly White SW 7009



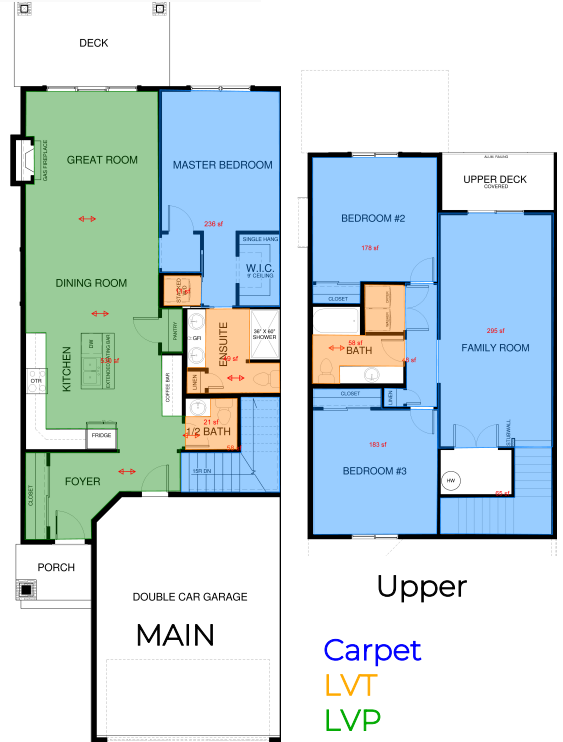
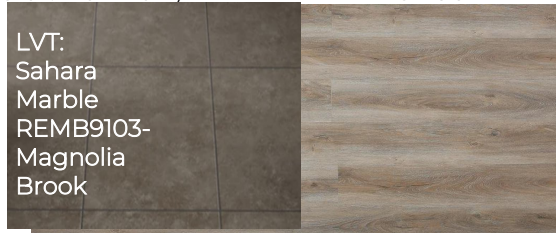
GE
Appliances



Flooring:
Carpet: Resista Soft
Style- Runway Show
Color: Harmony

LVP Republic
Pacific Oaks
Collection Western
Fir REPO4004

LVT:
Sahara
Marble
REMB9103-
Magnolia
Brook



Upper

Carpet
LVT
LVP

Selections indicated are a representation only. Actual product may vary in color, texture and subject to change based on availability.



Contact WCH Sales with any questions:
406-885-6081

*Selection sheet does not include all home selections