



209 Northridge Way

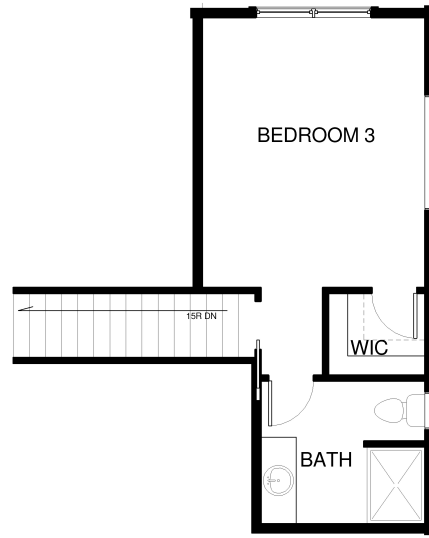
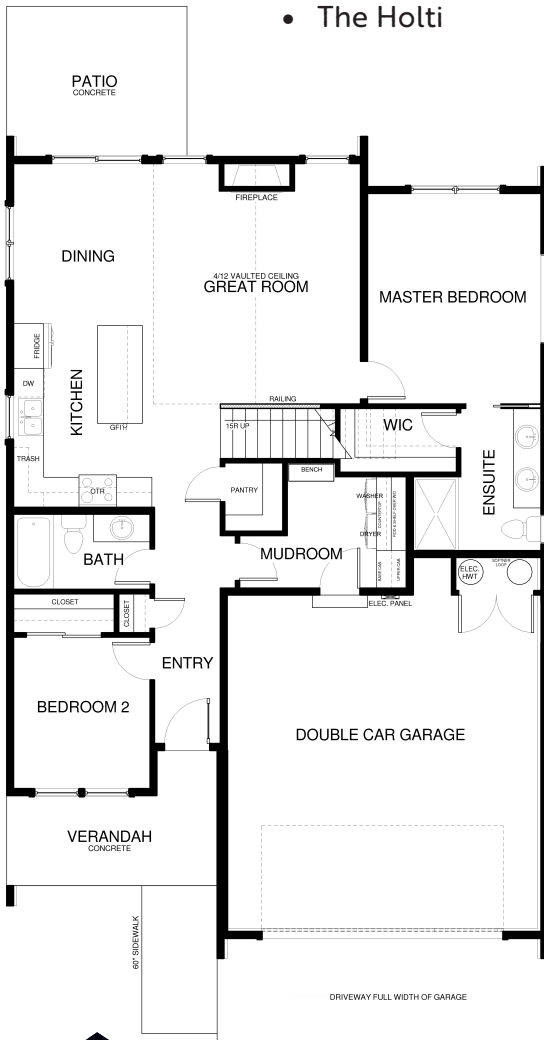
\$624,300



Specs:

- 1489 sqft
- 3 bedrooms
- 3 bathrooms
- Fireplace
- Vaulted ceilings
- Walk-in pantry
- Lot 53
- The Holti

Unique modern home backs to community green belt with fabulous mountain views! A large center island and walk-in pantry. Main floor master bedroom includes a beautiful bath with walk-in shower and walk-in closet. The upper level is a large private third bedroom with full bath and walk-in closet.



Westcraft Homes
Sales Team
406.885.6081
CALL TODAY

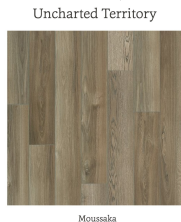
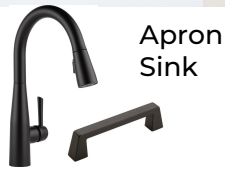
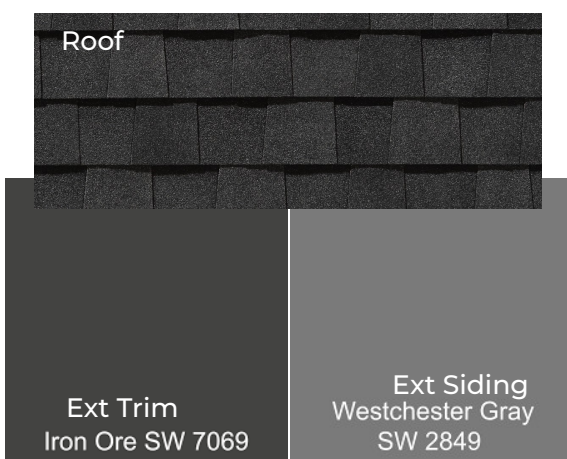


NorthviewMT.com



209 Northridge Way Lot 53 Selection Sheet*

*All selections are ordered and final at framing stage.



- Carpet
- LVP
- ↔ Direction of Flooring

Selections indicated are a representation only. Actual product may vary in color, texture and subject to change based on availability.

Contact WCH Sales with any questions:
406-885-6081



*Selection sheet does not include all home selections.