

The Willow

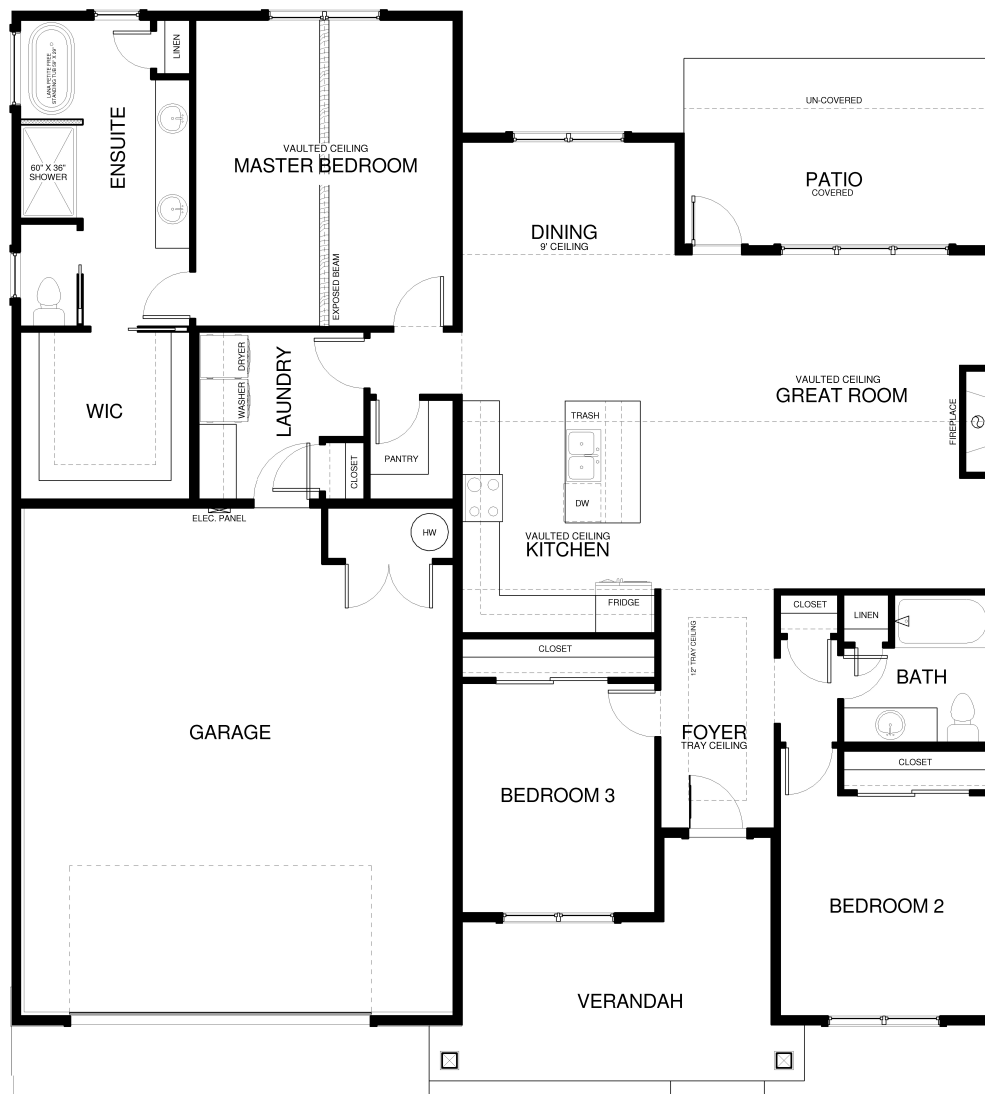
159 Swede Trail
Silverbrook Estates
\$739,700

Willow Overview:

Experience the charm of an open kitchen with stylish light grey cabinets, a spacious pantry, and a grand center island. Gather around the warm gas fireplace in the family room, complete with a vaulted ceiling and plenty of natural light pouring through abundant windows. Relax and rejuvenate in the lavish master suite with a freestanding soaking tub, dual vanity, linen closet, and a spacious walk-in closet. Two large secondary bedrooms offer comfort and versatility, along with a full hall bath and a convenient laundry/mud room. Located on a large green lot with plenty of room for all your outdoor activities!

Specs:

- 1782 sqft
- 3 bedrooms
- 2 bathrooms
- Fireplace
- 2 car garage
- Lot 212



This is a representation of the Willow plan, actual build may vary and is subject to change without notice. Selections are made at frame stage and are final.



MODEL OPEN
132 Antler Peak Lane
Friday - Monday
Noon - 4pm

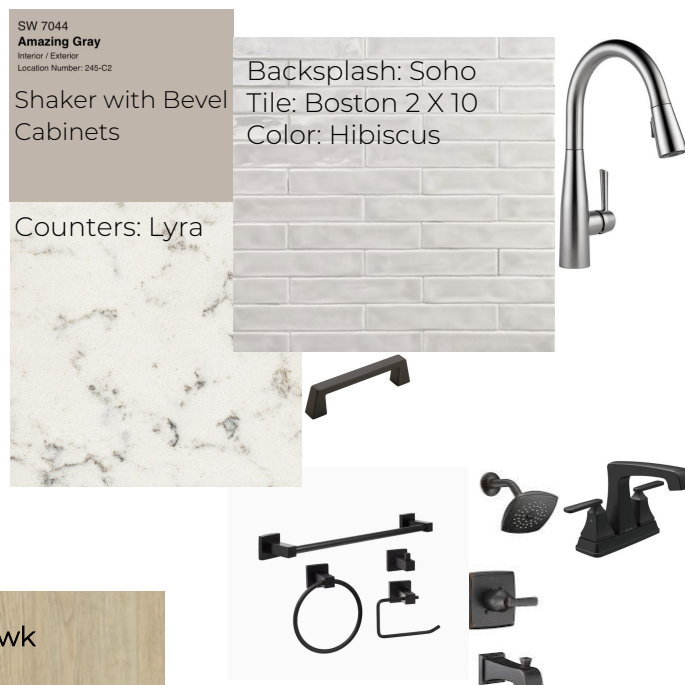
Sales Team
406.885.6081

Plan is copyrighted property of Westcraft Homes.
© 2023 WESTCRAFT HOMES.



159 Swede Trail Lot 212 Selection Sheet*

*All selections are ordered and final at framing stage.



Selections indicated are a representation **ONLY**. Actual product may vary in color, texture and **subject to change** based on availability.



*Sheet does not include all home selections.

Contact WCH Sales with any questions:
406-885-6081