

# The Elm II

119 W Monture Court  
Silverbrook Estates  
\$1,185,400

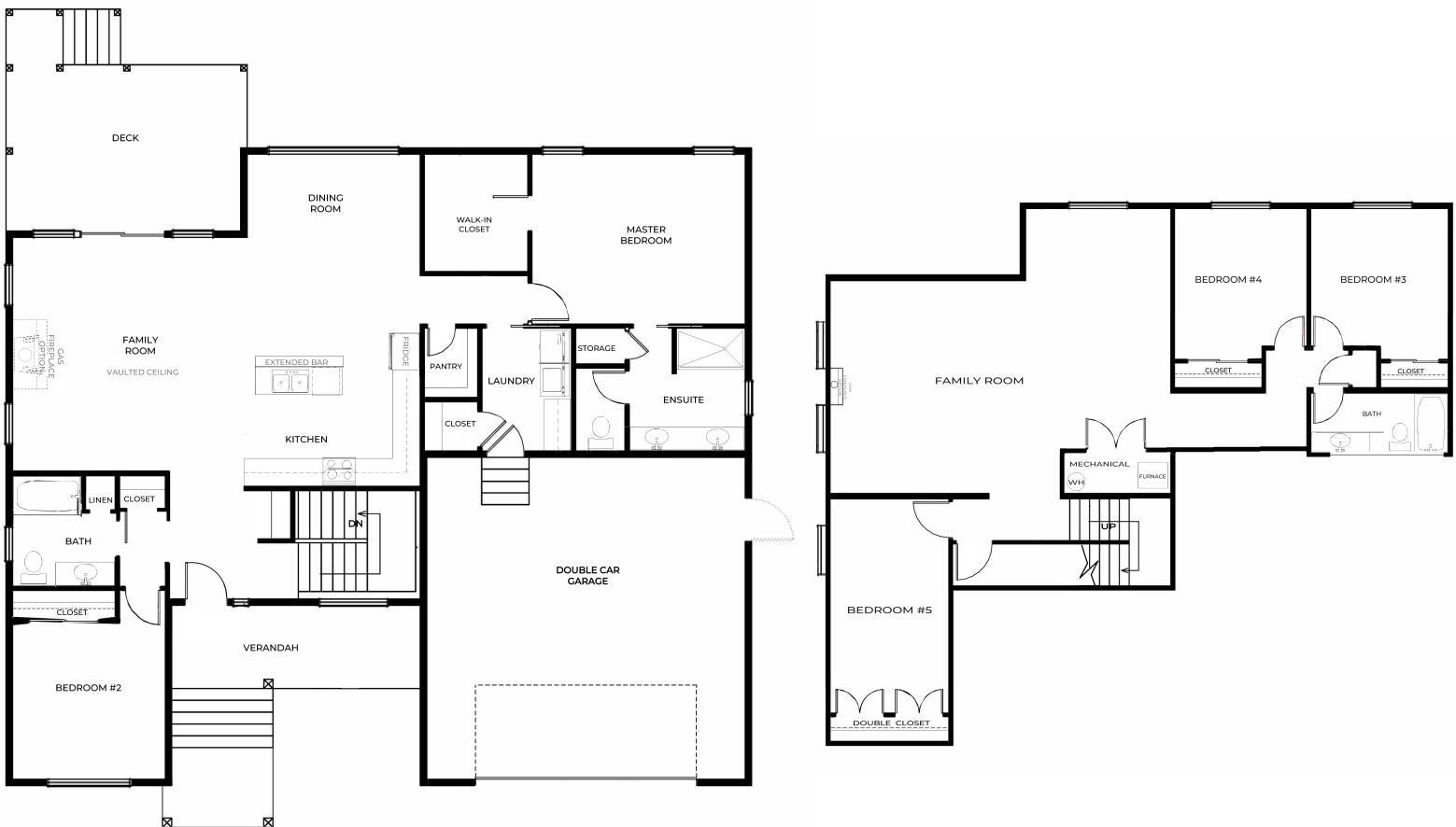
## Specs:

- 3138 SqFt
- Basement
- 5 bedrooms
- 3 full bathrooms
- Fireplace
- 2 car garage
- Cul-de-sac lot

## Lot36Overview:

Let the sun shine in! Spacious great room with vaulted ceiling, fireplace and large windows. The kitchen boasts abundant of cabinets, large island and a walk-in-pantry. The master suite with dual walk-in closets, dual bath vanity, large linen closet and oversized shower. Second bedroom and full hall bath also on the main level.

The basement includes an enormous family room, 3 bedrooms, full bath and great storage.



This is a representation of the Elm II plan, actual build may vary and is subject to change without notice. Selections are made at frame stage and are final.



MODEL OPEN  
132 Antler Peak Lane  
Friday - Monday  
Noon - 4pm

Sales Team  
406.885.6081

Plan is copyrighted property of Westcraft Homes.  
© 2023 WESTCRAFT HOMES.



# 119 W Monture Court Lot 36 Selection Sheet\*

\*All selections are ordered and final at framing stage.

## Exterior- 15

Body: Silver Strand 7057  
Trim: Pure White 7005  
Accent: Illusive Green 9164  
Front Door: Laurel Woods 7749 or English Walnut  
WCH Medium Gray Stain  
Weathered Wood- Landmark Shingles  
White Garage Door(s)\*  
\*Style of door varies  
Silver Shore Sculpted Ashlar  
White Styleline Milgard Windows

Door Color: English Walnut

Fireplace Stone

Interior Wall Color  
SW 9166 Drift of Mist  
Interior / Exterior  
Location Number: 238-C2  
SW 7005 Pure White  
Interior / Exterior  
Location Number: 255-C1  
Interior Trim & Doors

Shaker Cabinets  
SW 7005 Pure White  
Interior / Exterior  
Location Number: 255-C1  
Kitchen Perimeter  
Island/Master

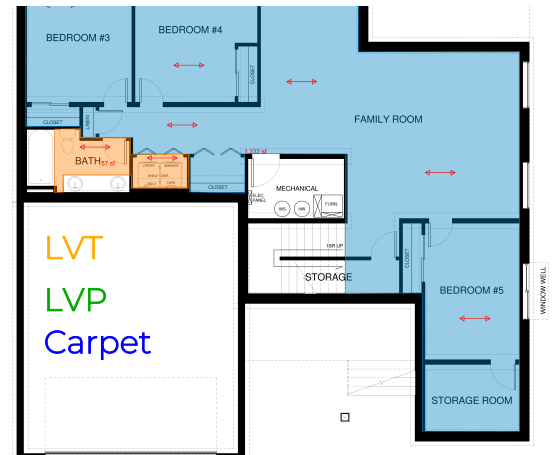
Emser Tile Name: Passion Blanco  
Quartz Counters: Desert Silver

Fireplace Style

KitchenAid Appliances

Carpet:  
Classic Traditions by Southwind:  
Filigree 3907 Silver

LVP:  
Tuffcore 1360 Re-Tuf Oak  
LVT  
Sahara Marble REMB9103- Magnolia Brook



Buyer(s) acknowledge the selections indicated are a representation ONLY. Actual product may vary in color, texture and subject to change based on availability.

\*Selection sheet does not include all home selections.



Contact WCH Sales with any questions:  
406-885-6081