

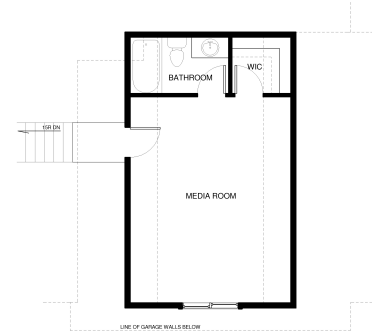
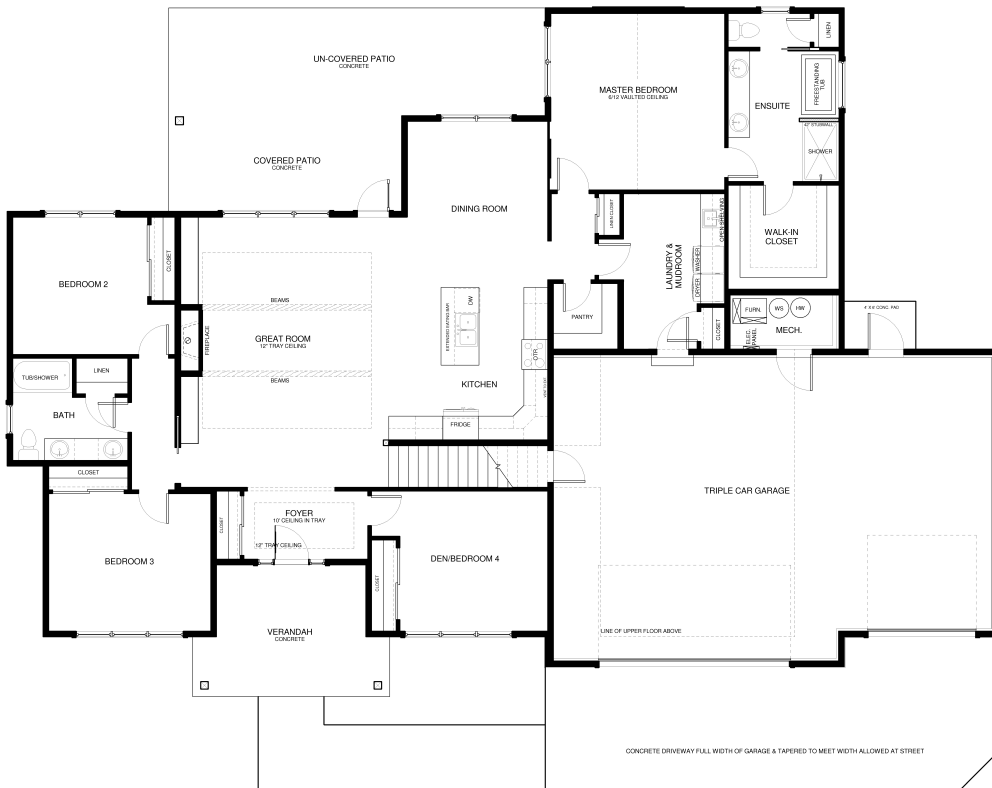
The Bitterroot



131 Grouse Haven Way
Silverbrook Estates
\$TBD

Specs:

- 2670 sqft
- 4 bedroom
- 3 bath
- Upper bonus room
- Fireplace
- 3 car garage
- Lot 94



Lot 94 Overview:

Private space for everyone in this gorgeous home. Located on a corner lot, this split bedroom plan features an upper bonus room that includes full bath and walk-in closet. Large great room off the kitchen & dining room. Incredible mud room/laundry with lots of storage. Luxurious master suite with soaking tub, separate shower, dual vanity and large walk-in closet. 3 car garage and large patio area.

This is a representation of the Bitterroot plan, actual build may vary and is subject to change without notice. Selections are made at frame stage and are final.



MODEL OPEN
132 Antler Peak Lane
Friday - Monday
Noon - 4pm

Sales Team
406.885.6081

Plan is copyrighted property of Westcraft Homes.
© 2024 WESTCRAFT HOMES.



131 Grouse Haven Way Lot 94 Selection Sheet*

*All selections are ordered and final at framing stage.

Soffit/Fascia

Peppercorn SW 7674

Body

Cityscape SW 7067



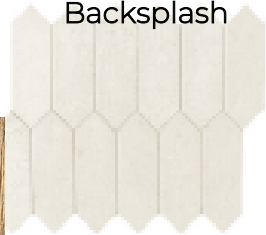
SW 7005
Pure White
Interior / Exterior
Location Number: 255-C1

Door/Trim

Walls/Ceiling

Egret White SW 7570

Backsplash



Fireplace tile



CS-Terra Nova Honed
Picket Mesh



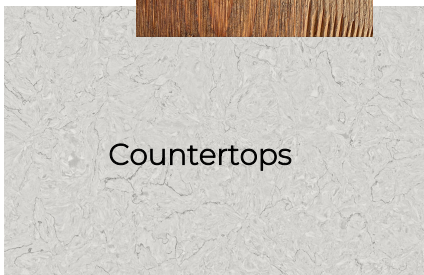
Fireplace design

Island Cabinets

Perimeter
Cabinets



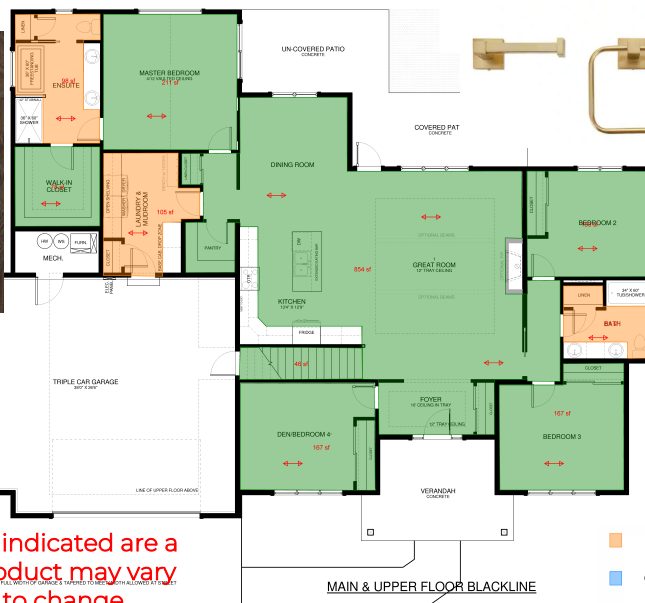
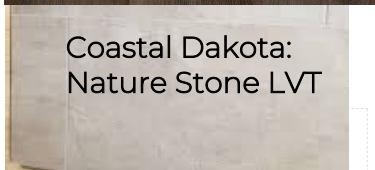
Countertops



1360 RE-TUF LVP



Coastal Dakota:
Nature Stone LVT



- LVT
- Carpet
- LVP

Shower Tile



Master Tub

Buyers acknowledge selections indicated are a representation ONLY. Actual product may vary in color, texture and are subject to change based on availability

*Selection sheet does not include all home selections.