

The Elm

140 Werner Peak Trail
Silverbrook Estates
\$TBD

Specs:

- 1682 sqft
- 3 bedrooms
- 2 bathrooms
- Fireplace
- 2 car garage
- Lot 193

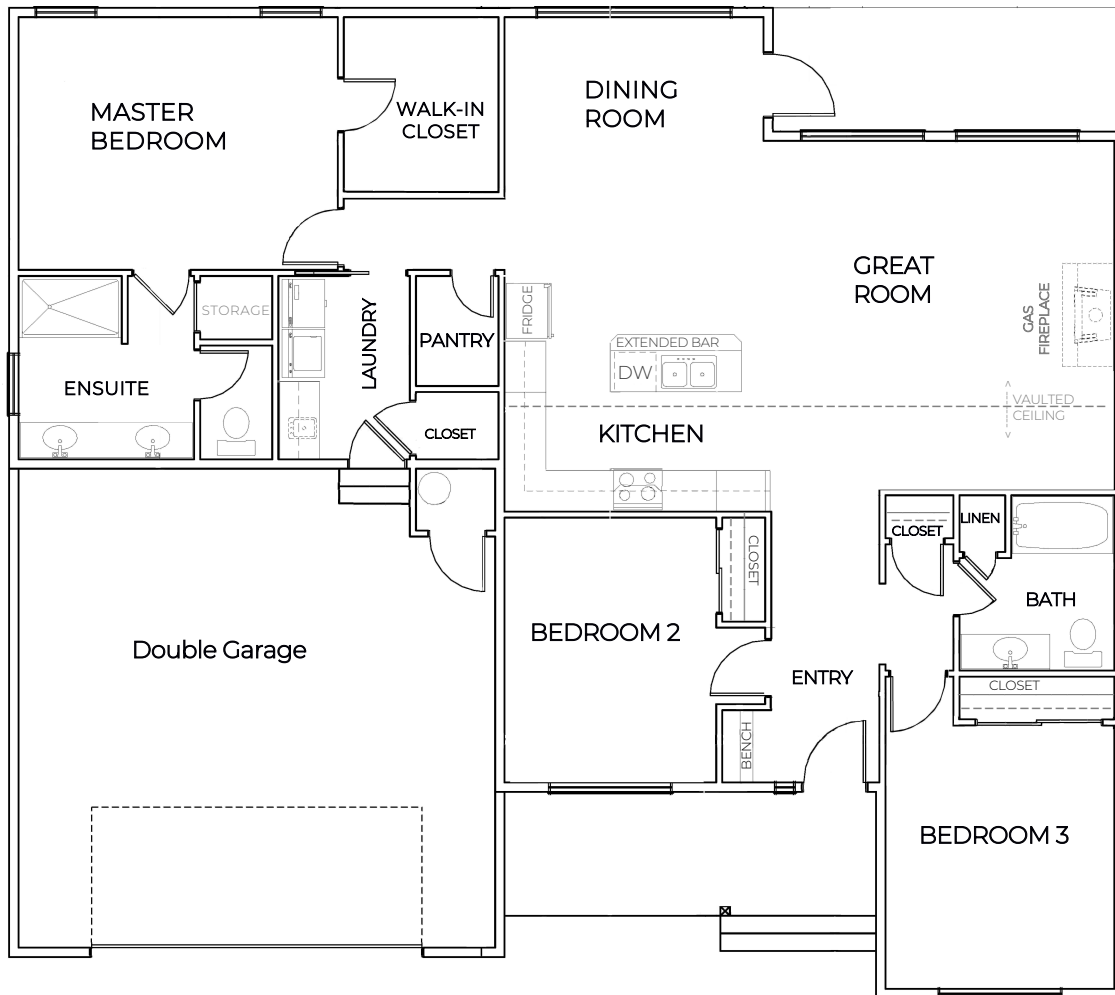
ElmOverview:

Welcome to your dream home! This 3-bed, 2-bath gem in Silverbrook Estates is a showcase of modern living.

The kitchen features gorgeous cabinets, gleaming counters, a tile backsplash, and a walk-in pantry. The extended island is perfect for entertaining.

A vaulted ceiling, gas fireplace, and large windows create an inviting atmosphere in the great room and kitchen.

Enjoy a spacious master bedroom with a walk-in closet and a luxurious bathroom with dual vanity and a tiled walk-in shower.



This is a representation of the Elm plan, actual build may vary and is subject to change without notice. Selections are made at frame stage and are final.

140 Werner Peak Trail Lot 193 Selection Sheet*

Selections indicated are a representation **ONLY** and are provided as a courtesy. Actual product may vary in color, texture and **subject to change** based on availability.



*Sheet does not include all home selections.

Contact WCH Sales with any questions:
406-885-6081