



217 Northridge Way

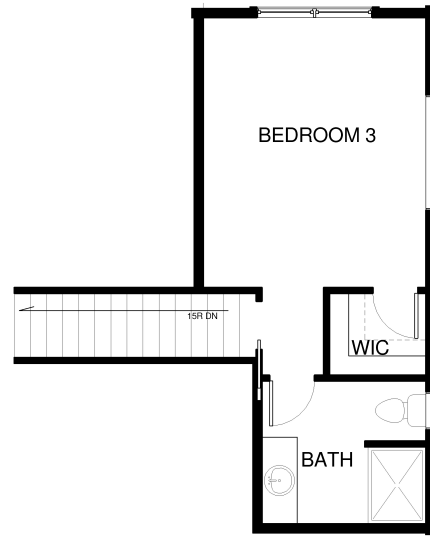
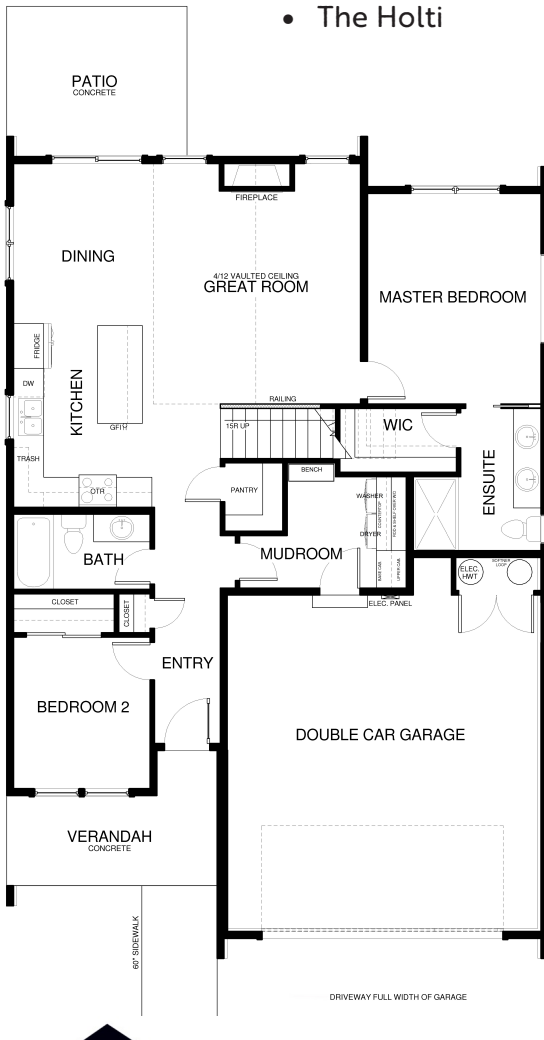
\$707,000

Specs:

- 1489 sqft
- 3 bedrooms
- 3 bathrooms
- Fireplace
- Vaulted ceilings
- Walk-in pantry
- Lot 55
- The Holti



Unique modern home backs to community green belt with fabulous mountain views! A large center island and walk-in pantry. Main floor master bedroom includes a beautiful bath with walk-in shower and walk-in closet. The upper level is a large private third bedroom with full bath and walk-in closet.



Westcraft Homes
Sales Team
406.885.6081
CALL TODAY

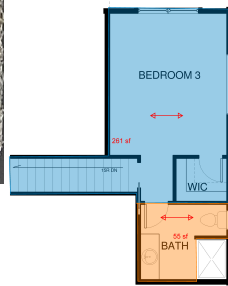
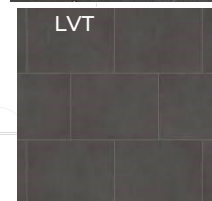
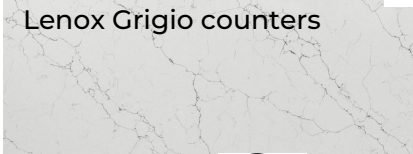
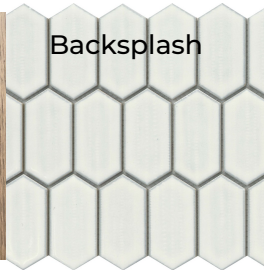
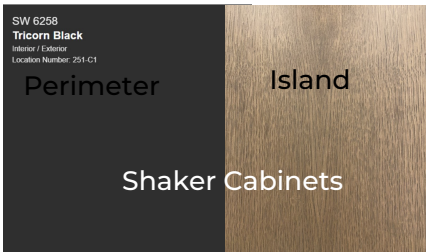
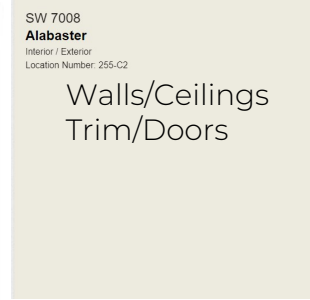
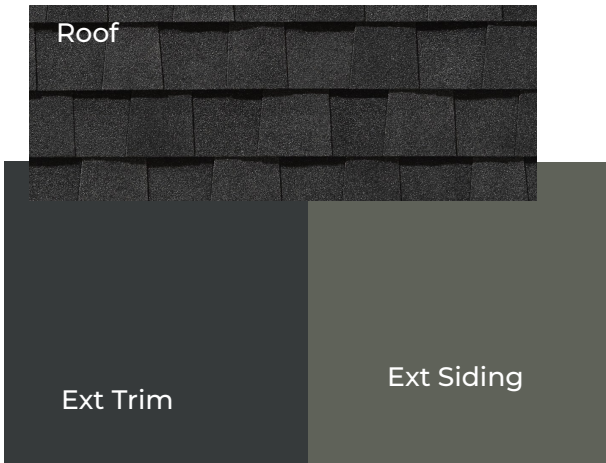
NorthviewMT.com

All information and illustrations represented on this sheet are approximate in nature and are subject to change and refinements without notice at the builder's discretion. Drawing can not be used for construction. Plan is copyrighted property of Westcraft Homes. © 2024 WESTCRAFT HOMES.



217 Northridge Way Lot 55 Selection Sheet*

*All selections are ordered and final at framing stage.



- LVT
- Carpet
- LVP

Selections indicated are a representation only. Actual product may vary in color, texture and subject to change based on availability.

Contact WCH Sales with any questions:
406-885-6081



*Selection sheet does not include all home selections.