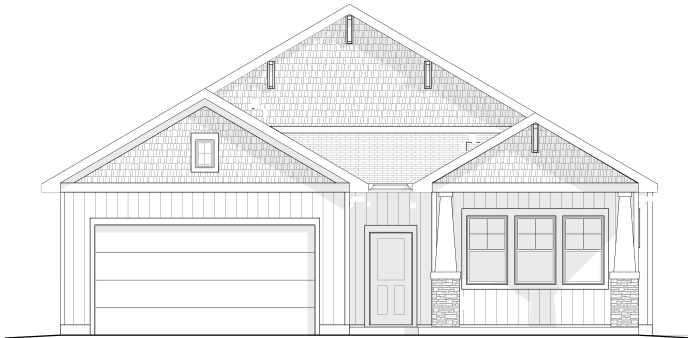


The Westhaven

143 Swede Trail
Silverbrook Estates
\$755,695



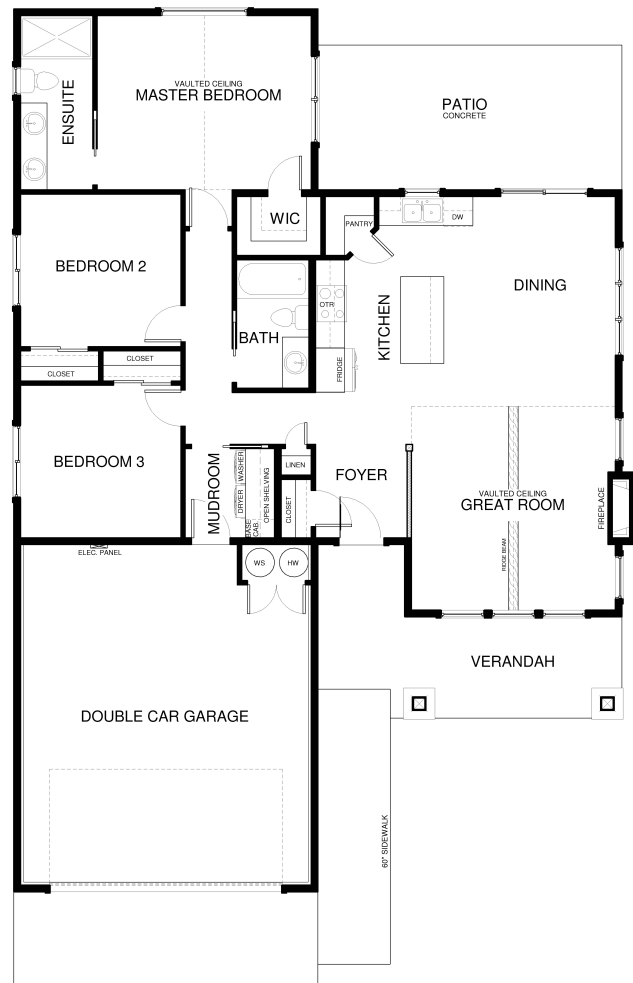
*No window above garage

Lot 216 Overview

Bright, spacious, vaulted ceilings and open living in this lovely ranch home. Features include a large great room with vaulted ceiling, open to the spacious kitchen with walk-in pantry and large island. The master bedroom includes a walk-in closet and full master bath with dual vanity. Everything you need in a single level home!

Specs:

- 1372 sq ft
- 3 bedrooms
- 2 bathrooms
- Vaulted ceilings
- Fireplace
- Walk-in pantry
- Walk-in master closet
- Extended 2 Car Garage



This is a representation of the Westhaven plan, actual build may vary and is subject to change without notice. Selections are made at frame stage and are final.



MODEL OPEN
168 Antler Peak Lane
Friday - Monday
Noon - 4pm

Sales Team
406.885.6081

Plan is copyrighted property of Westcraft Homes.
© 2024 WESTCRAFT HOMES.



143 Swede Trail Lot 216 Selection Sheet*

*All selections are ordered and final at framing stage.

Body
Westchester Gray
SW 2849

Gables
Gray Matters SW 7066

Soffit/ Fascia Trim

Interior Trim & Doors
SW 7005
Pure White
Interior / Exterior
Location Number: 215-C1

Interior Wall
SW 9166
Drift of Mist
Interior / Exterior
Location Number: 215-C2

Fireplace design

Countertops:
Stratus Quartz
Lenox Oro

Island, Master, Laundry
Rosemary SW 6187
Interior / Exterior
Location Number: 215-C5

Kitchen Perimeter, main bath

LVP throughout

Appliances shown include a microwave, refrigerator, oven, and dishwasher.

Buyer(s) acknowledge the selections indicated are a representation ONLY. Actual product may vary in color, texture and subject to change based on availability. Fencing and landscape NOT included

*Selection sheet does not include all home selections.



Contact WCH Sales with any questions:
406-885-6081