

The Holly

179 E Monture Ridge
Silverbrook Estates
\$664,800



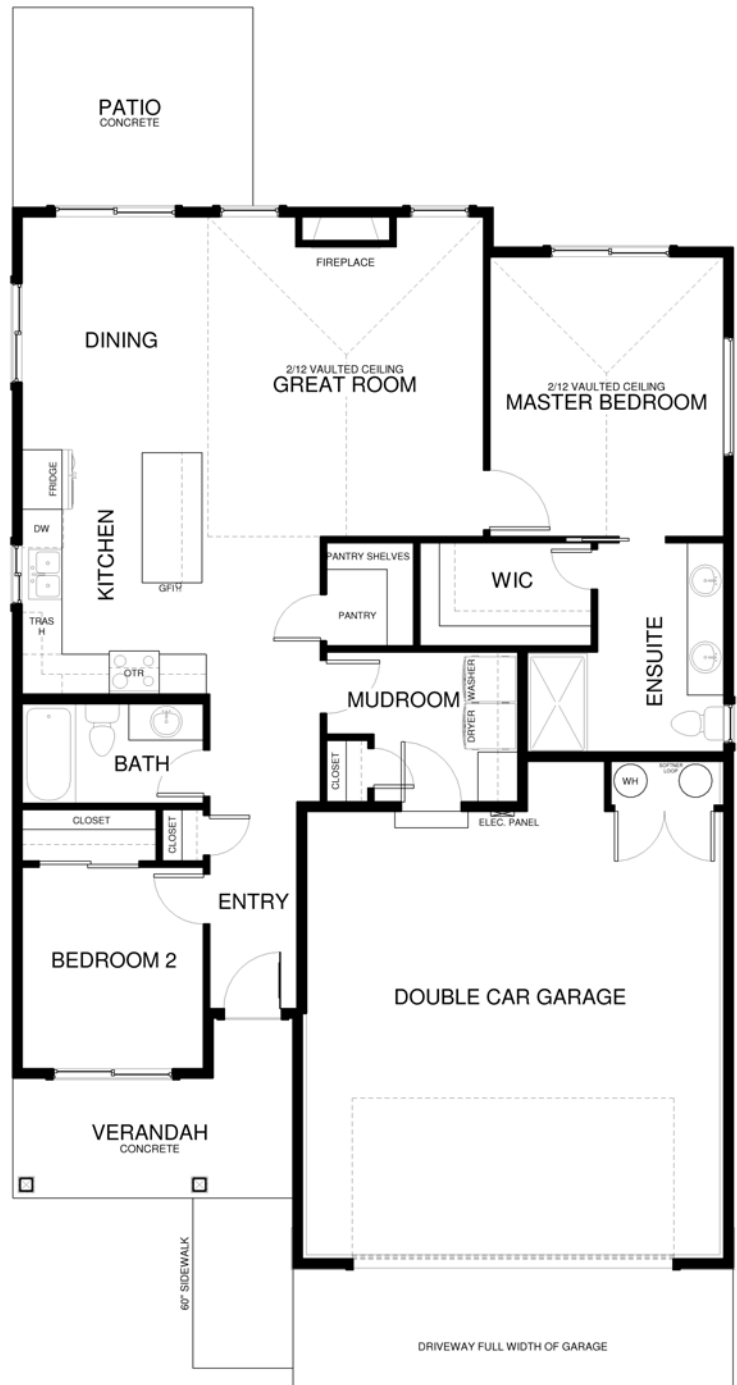
Specs:

- 1218 sq ft
- 2 bedrooms
- 2 bathrooms
- Vaulted ceilings
- Fireplace
- Pantry
- Walk-in master closet

HollyOverview:

Spacious home with large windows, vaulted ceilings and open great room/ kitchen combination. The kitchen boasts a center island and big pantry. A large master bedroom includes a well designed en suite with walk-in shower and walk-in closet. Spacious mudroom/ laundry.

Lots of closet space!



This is a representation of the Holly plan, actual build may vary and is subject to change without notice. Selections are made at frame stage and are final.



MODEL OPEN
168 Antler Peak Lane
Friday - Monday
Noon - 4pm

Sales Team
406.885.6081

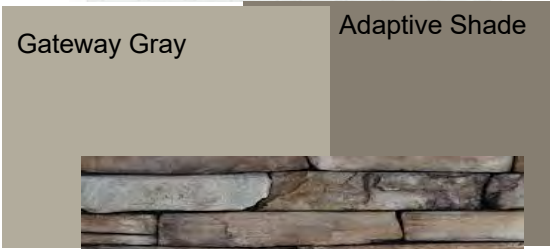
Plan is copyrighted property of Westcraft Homes.
© 2024 WESTCRAFT HOMES.



179 E Monture Ridge Lot 386 Selection Sheet*



Garage Doors: CHI stamped Shaker
Color: Bronze



Gateway Gray

Adaptive Shade



Exterior Paint:
Body/Trim: Gateway Gray 7644 Soffit/
Fascia: Adaptive Shade 7053

Ext Stone: Selkirk Rustic Ledgestone
Driftwood



Flooring:
LVP: Seattle SK
Flooring

Selections indicated are a representation **ONLY** and are provided as a courtesy. Actual product may vary in color, texture and **subject to change** based on availability.

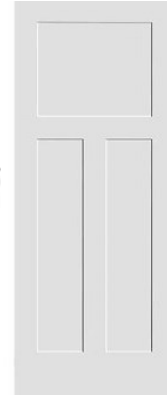


BLACK FOX
SW 7020

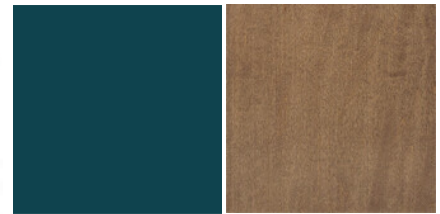


Door Hardware:
Halifax Square
Lever by
Kwikset

Cabinets: Nocturnal Teal Location(s): Island,
laundry and baths
Maple Jute Stain Locations: Kitchen Perimeter
Cabinet Pulls: Naples by Hardware Resources Satin
Bronze



Walls/Ceilings:
Drift of Mist
SW9166
Trim/Doors: Pure
White SW7005



Distinct Backsplash: Terra Nova Picket

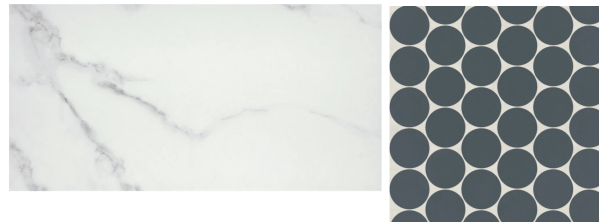


Countertops:
Aspen Calada
by Revera



Appliances: GE Profile

Distinct Shower Tile: Emser Contessa Dama
12x24
Floor Tile Name: Marin Midnight Lrg Circle



*Sheet does not include all home selections.

Contact WCH Sales with any questions:
406-885-6081