

The Primrose

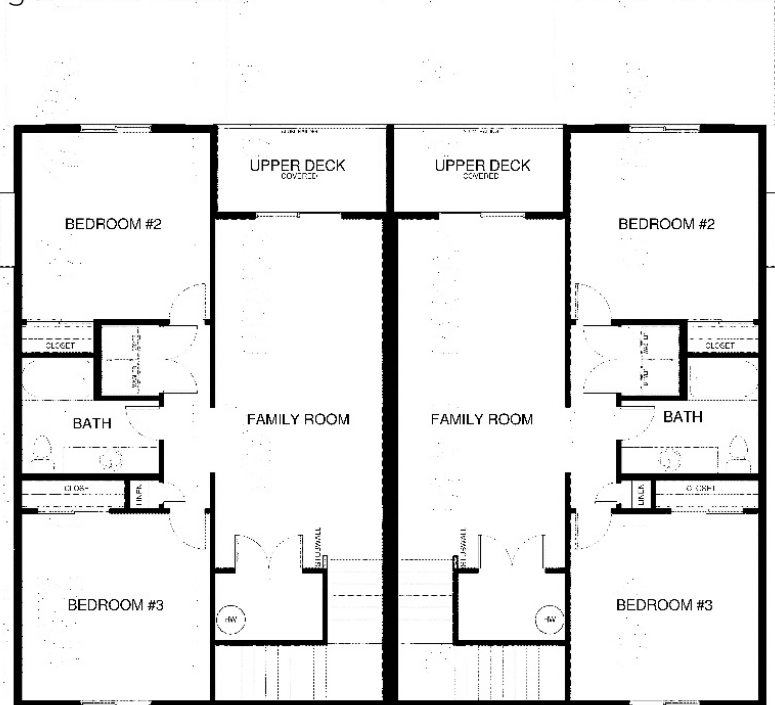
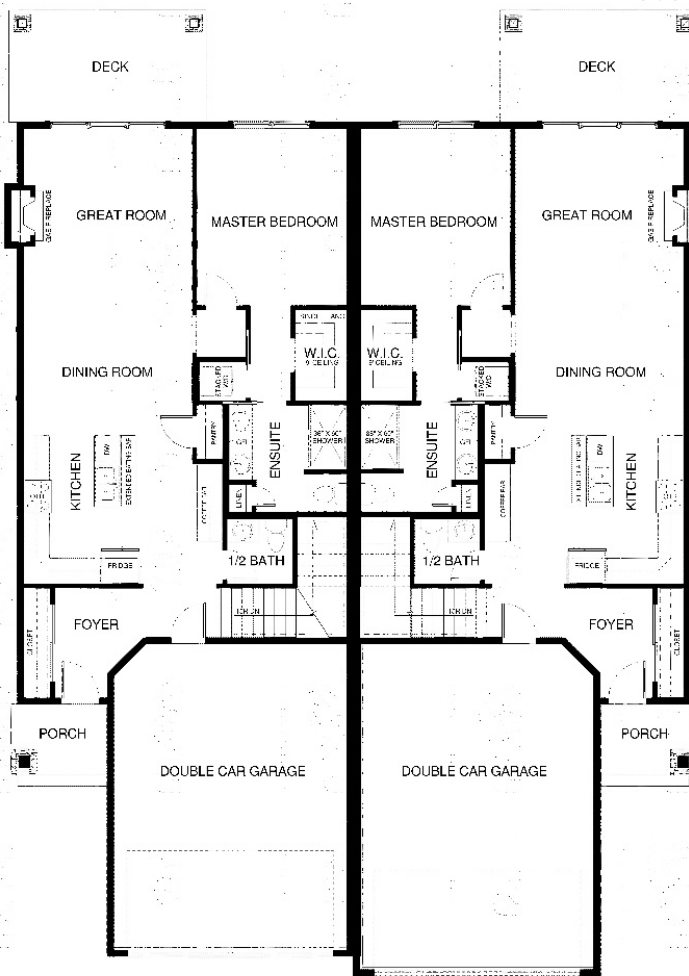
Located in The Meadows

Luxury Condominiums

Kalispell, Montana



Easy maintenance and luxurious living at its finest! Gorgeous condo features an open kitchen with pantry, island and extra serving cabinet/buffet. Dining area and large great room with gas fireplace. The main level master suite includes walk-in closet, dual vanity, walk-in shower and stackable washer/dryer closet. Upper level includes a large family room, two secondary bedrooms, full bath, full size washer/dryer closet and plenty of storage. Lots of space to enjoy year-round. A great double garage for vehicles, toys or additional storage.



Specs:

- 2069 sq ft
- 3 Bedroom
- 2.5 Bath
- Main level master
- 2 Car Garage

This is a representation of the Lupine plan, actual build may vary and is subject to change without notice. Selections are made at frame stage and are final.



2023 Builder of the Year

westcrafthomes.com

Call for a Private Showing
Sales Team 406.885.6081

Plan is copyrighted property of Westcraft Homes.
©2025 WESTCRAFT HOMES.

