

# The Elm II

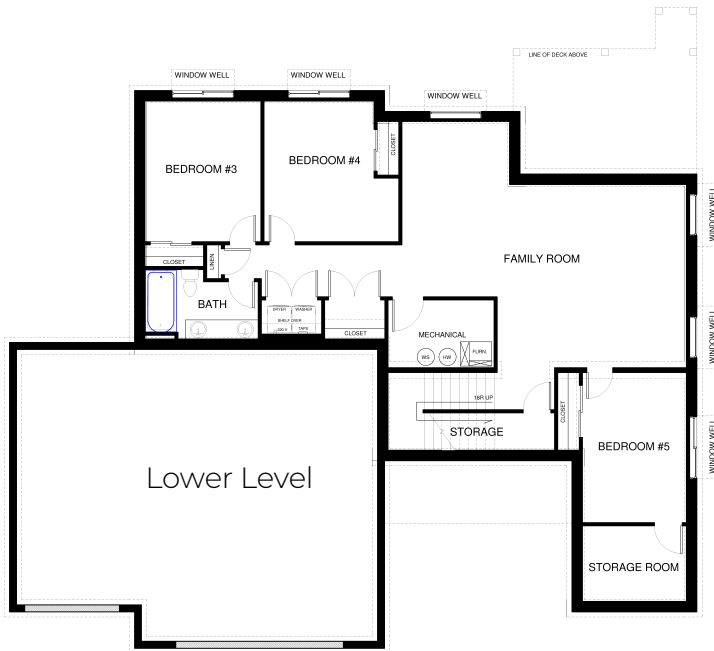


## Elm II Overview:

Let the sun shine in through large windows, vaulted ceilings and the spacious great room. The kitchen boasts abundant of cabinets, large island and a walk-in-pantry. Large great room with vaulted ceiling with fireplace. The master suite with dual vanity, large linen closet and oversized shower. Second bedroom and full hall bath also on the main level. The basement includes an enormous family room, 3 bedrooms, full bath and incredible storage.

### Specs:

- 3057 sqft
- 5 bedrooms
- 3 full bathrooms
- Fireplace
- 2 or 3 car garage, depending on lot size



This is a representation of the Elm II plan, actual build may vary and is subject to change without notice. Selections are made at frame stage and are final.



2023 Builder of the Year  
westcrafthomes.com

MODEL OPEN  
119 Antler Peak Lane  
Friday - Monday  
Noon - 4pm

Sales Team  
406.885.6081

Plan is copyrighted property of Westcraft Homes.  
© 2025 WESTCRAFT HOMES.

