

# The Hazel II



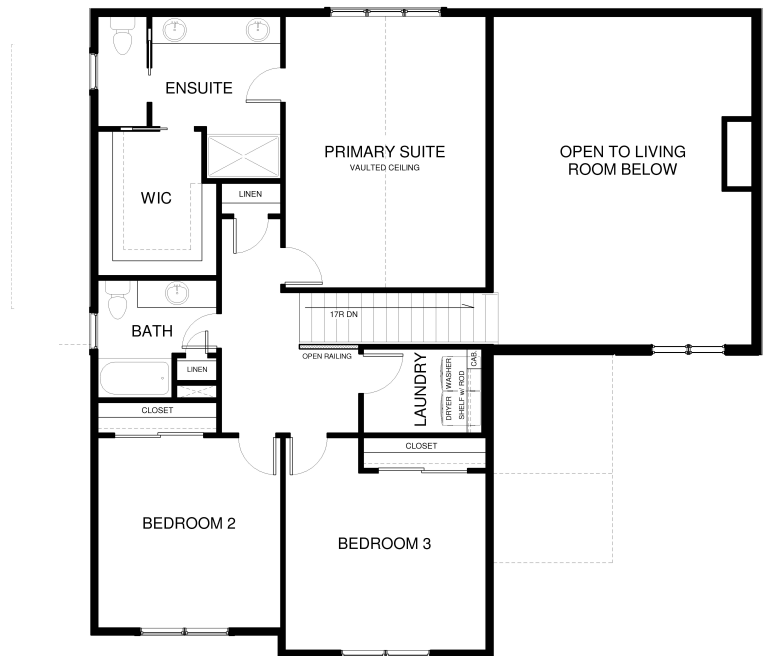
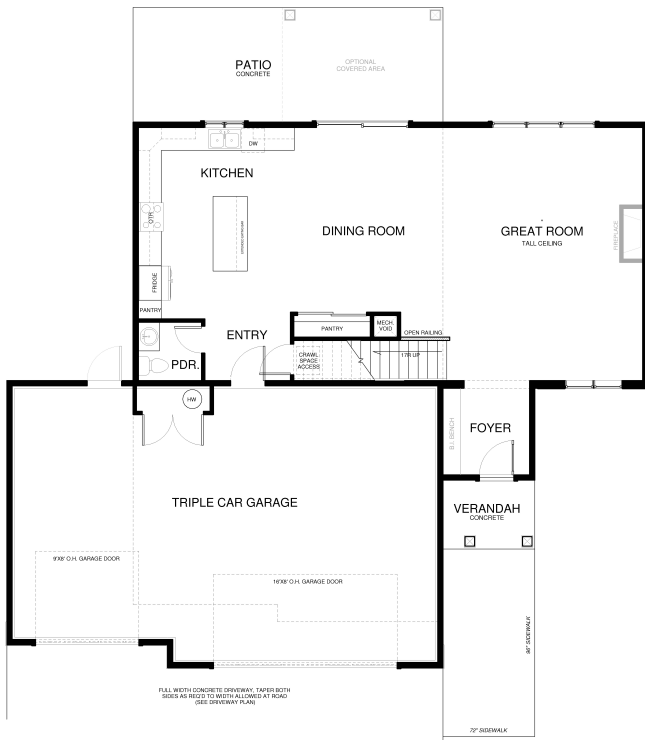
## Specs:

- 2257 sq ft
- 3BD / 2.5 Bath
- Fireplace
- 2 or 3 car garage, depending on lot size

## Hazel II Overview:

Another great home from Westcraft Homes! The main floor features a large great room with soaring windows, fireplace and open to the dining and kitchen.

Large kitchen includes oversized island and pantry closet. Upper level master retreat with large ensuite: dual vanity, walk-in shower and walk-in closet. Upper floor also includes; second bedrooms, full bath and laundry.



This is a representation of the Hazel II plan, actual build may vary and is subject to change without notice. Selections are made at frame stage and are final.



**MODEL OPEN**  
**156 Antler Peak Lane**

Monday-Friday 2pm-6pm  
Saturday 11am - 5pm  
Sunday Noon - 4pm

**Sales Team**  
**406.885.6081**

Plan is copyrighted property of Westcraft Homes.  
© 2025 WESTCRAFT HOMES.

