

The Primrose

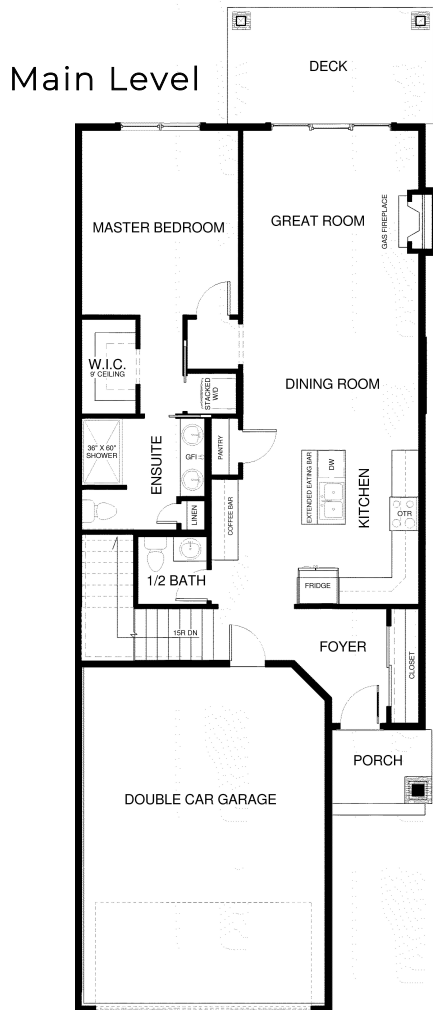
\$689,000

175 Meadows Vista Loop 30B
Kalispell, Montana

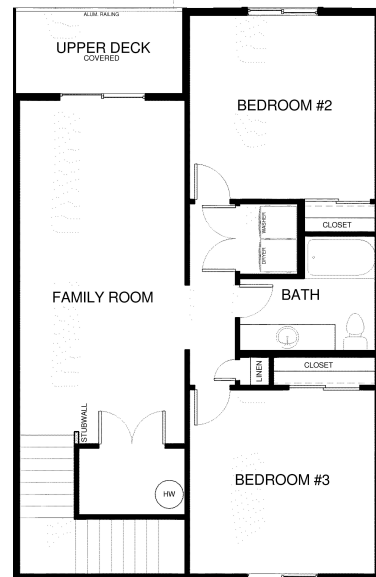


The Primrose

The Primrose duplex offers a gorgeous three bedroom, 2 1/2 bath home with walk-out patio, upper deck and 2 car garage. This open floor plan features a spacious kitchen, dining, great room and master suite on the main level. The upper level includes a family room, 2 bedrooms, full bath and additional storage!



Upper Level



Specs:

- 2069 sq ft
- 3 Bedroom
- 2.5 Bath
- Main level master
- 2 Car Garage

This is a representation of the Primrose plan, actual build may vary and is subject to change without notice. Selections are made at frame stage and are final.



2023 Builder of the Year

westcrafthomes.com

Call for a Private Showing
Sales Team 406.885.6081

Plan is copyrighted property of Westcraft Homes.
© 2025 WESTCRAFT HOMES.



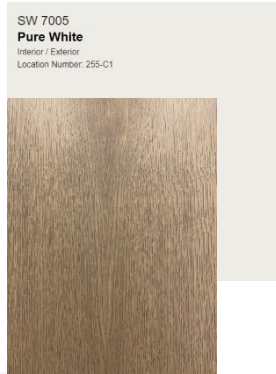
175 Meadow Vista Loop 30B

The Primrose

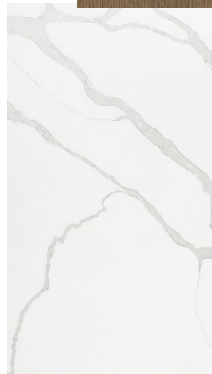
Cabinets: Shaker with Bevel

Amazing Gray SW7044: Perimeter & Laundry
Driftwood Oak Stain: Island, Shelves, Baths

Pulls: Mulholland 3 3/4" Pull by Amerock*
Black Bronze



Countertops: Statuario Quartz by Revera
Backsplash:
Arizona Flash Ivory
3 x 12



Bath Hardware Sure Loc Baden Bath
Hardware- Flat Black

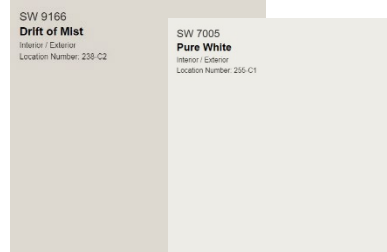
Bath Faucet:
Ashlyn Matte Black
Bathroom Faucet Package



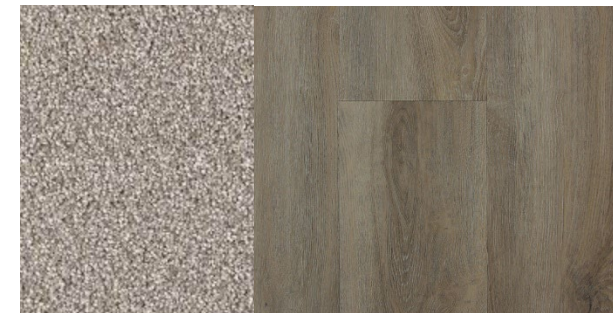
Appliances: GE Profile



Interior Walls/Ceilings:
Drift of Mist SW9166
Doors/Trim:
Pure White SW7005



Flooring:
Carpet: Camden CN Iron Frost
LVP: Tuffcore 1362 Oak



Fireplace: Arizona
Tile Calacatta UMBER

