

# The Bitterroot II

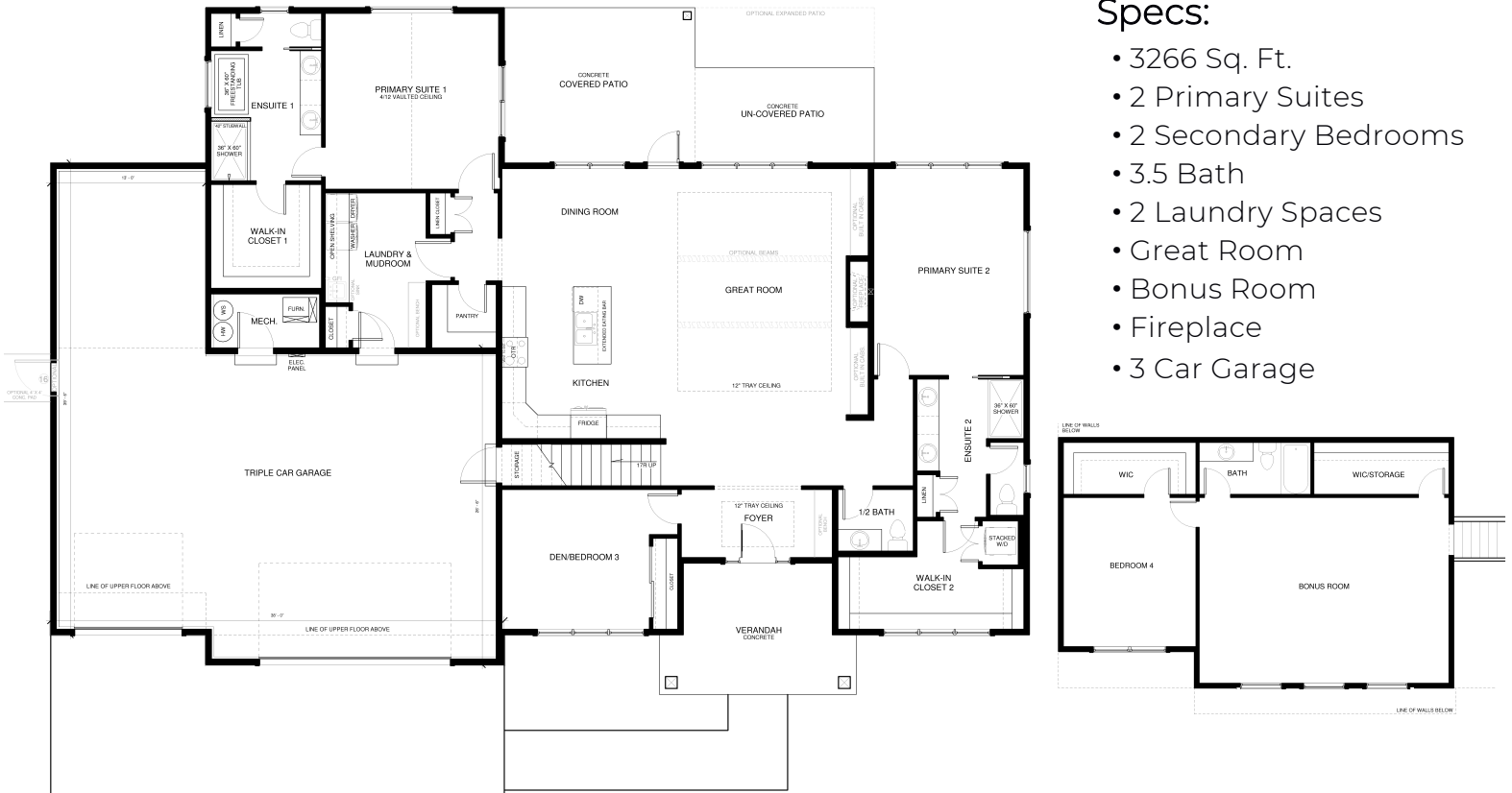


This thoughtfully planned home features two main-level primary suites, each offering exceptional comfort and privacy. Both ensuites include generous amenities such as dual vanities and expansive walk-in closets, with one suite featuring a freestanding soaking tub and the other offering stackable washer/dryer hookups for added convenience.

The main level also includes a den, a spacious great room and kitchen ideal for gathering, and flexible living space throughout. Upstairs, you'll find a large bonus room, an additional bedroom

and full bath, plus extra storage, providing even more room to live, work, and entertain. Incredible 3 car garage with space for workshop.

Customize this home to best suit your living needs!



## Specs:

- 3266 Sq. Ft.
- 2 Primary Suites
- 2 Secondary Bedrooms
- 3.5 Bath
- 2 Laundry Spaces
- Great Room
- Bonus Room
- Fireplace
- 3 Car Garage

This is a representation of the Bitterroot II plan, actual build may vary and is subject to change without notice. Selections are made at frame stage and are final.



westcrafthomes.com

Call for to schedule  
an appointment  
406.885.6081

Plan is copyrighted property of Westcraft Homes.  
© 2026 WESTCRAFT HOMES.

