

# The Madison II

## Madison II Overview:

Welcome to the Madison II, an expanded version of our popular Madison plan that blends elegant single-level living with a versatile upper-level retreat. Natural light fills the great room and flows into the gorgeous kitchen with a separate dining area. Designed with both beauty and function in mind, the kitchen features an oversized island, butler's and walk-in pantry.

The private owner's suite offers a spa-inspired 4-piece bath, and a walk-in closet. Two additional generously sized bedrooms, a full bath, and a den complete the main level.

Upstairs, the Madison II adds exceptional flexibility with a spacious bonus room, full bathroom, and closet — perfect for a guest retreat, media room, home office, or multi-generational living space.

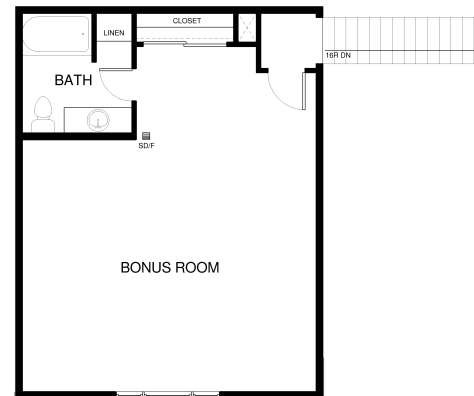
A mudroom with laundry ensures everyday convenience and organization.

Experience the Madison II — where timeless design, comfort, and expanded living come together beautifully.



## Specs:

- 2850 sq ft
- 3 bedrooms
- Den
- Bonus Room/  
Bedroom
- 2.5 baths
- Butler's Pantry
- 3 Car Garage



This is a representation of the Madison II plan, actual build may vary and is subject to change without notice. Selections are made at frame stage and are final.



westcrafthomes.com

Call for to schedule  
an appointment  
406.885.6081

Plan is copyrighted property of Westcraft Homes.  
© 2026 WESTCRAFT HOMES.

