

The Elm II Extended

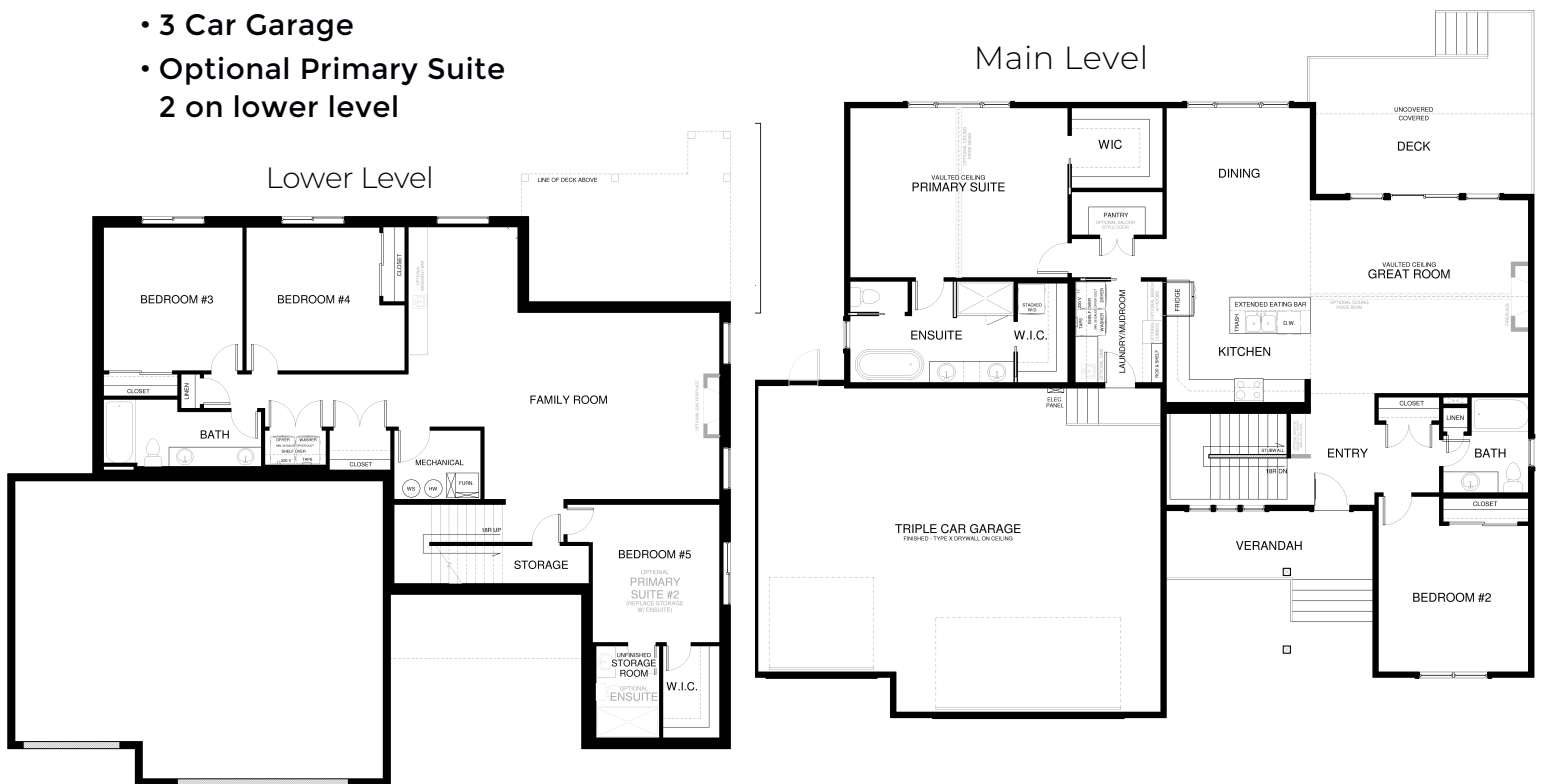


Specs:

- 3513 sqft
- 5 Bedrooms
- 3 Bathrooms
- Basement
- Fireplace
- 3 Car Garage
- Optional Primary Suite 2 on lower level

The Elm II Extended offers enhanced comfort and flexibility throughout. Large windows and vaulted ceilings fill the great room, dining area, and primary suite with natural light, while the kitchen features abundant cabinetry, a large island, and an oversized walk-in pantry flowing seamlessly into the inviting great room with fireplace.

The enlarged primary suite creates a spa-inspired retreat with dual vanities, generous storage, and an oversized shower. The expanded basement adds even more versatility with a spacious family room, three bedrooms, a full bath, incredible storage, and the option for a second primary suite — perfect for guests or multi-generational living.



This is a representation of the Elm II Extended plan, actual build may vary and is subject to change without notice. Selections are made at frame stage and are final.

